



is a software solution for

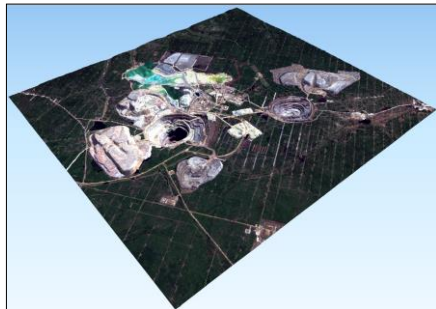
- the automated generation of Digital Surface Models (DSM) based on satellite, UAV, airborne, and terrestrial stereo data
- the automated generation of indexes and temporal descriptors based on satellite medium and high resolution time-series complemented by a multi-purpose tool including a wide range of functions to facilitate the image treatment. Products are fully compatible with [SARscape](#)

Space stereo

Automated DSM generation from satellite data

Key features:

- All satellite stereo and tri-stereo data supported
- Robust image matching solution
- Refinement of absolute geolocation through Ground Control Points
- Automated image ortho-rectification

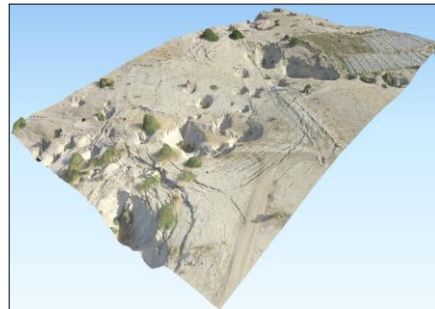


UAV & airborne stereo

Automated DSM generation from UAV & airborne data

Key features:

- Standard devices supported
- Robust image matching solution
- Refinement of absolute geolocation through Ground Control Points
- Automated image ortho-rectification and mosaicking
- High data volume supported



Terrestrial stereo

Automated DSM generation from terrestrial data

Key features:

- Stereo image series acquired from standard cameras supported
- Robust image matching solution
- Refinement of absolute geolocation through Ground Control Points
- Automated image ortho-rectification and mosaicking

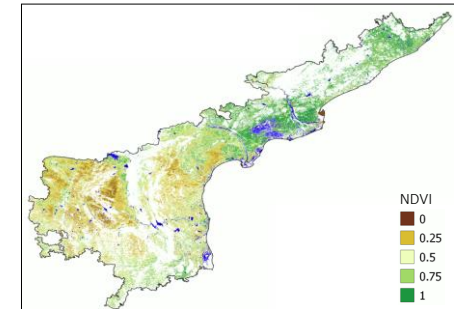


Space Multi-Temporal

Automated indexes generation from satellite time-series

Key features:

- MODIS, Landsat, and Sentinel-2 time-series supported
- Automated data downloading, processing, compositing, and mosaicking
- Automated generation of indexes and temporal descriptors on large scale level



is available under  ENVI and  QGIS environment

For information contact sarmap@sarmap.ch